

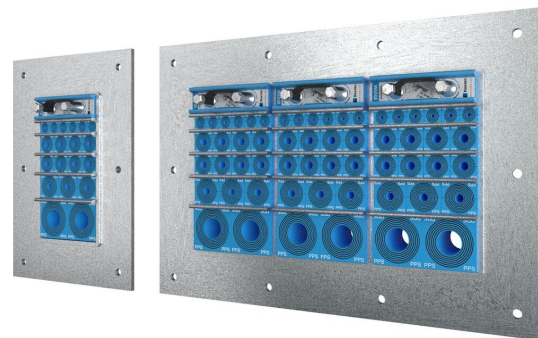


Roxtec GH-gennemføring til trækrør af plast

Brandklassificeret gennemføring til trækrør.

Roxtec GH til trækrør af plast er en gennemføring til bolting på plane strukturer som stål- eller sandwichvægge/-gulve, hvor der er behov for en brandklassificering. Den rektangulære stålramme giver mulighed for føring af trækrør med høj kabeltæthed. Roxtec RM PPS-tætningsmoduler til trækrør af plast er mærket med tilsvarende NW-størrelsesnummer for at forenkle monteringen. RM PPS-moduler kan kombineres med almindelige RM-moduler til en blanding af trækrør og kabler i samme ramme.

- Nem at vedligeholde og inspicere
- Har indbygget reservekapacitet



Produktegenskaber



Brandklassificeret



IP/UL NEMA

Byggekonstruktion



Sandwich
panel



Metal

Monteringstype



Bolting

Normeringer og certifikater

Brand

- E/EI-klassificering i henhold til EN 45545 E60

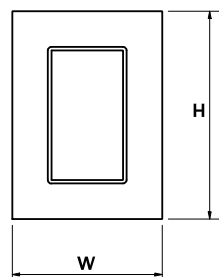
Tæthed

- IP 66/67

Rammedimensioner

mm/kg

De nedenstående rammevarianter udgør et begrænset udvalg. Du kan se hele udvalget af rammer og konfigurationer på [roxtec.com](https://www.roxtec.com).

	Title	Rammeåbninger	Pakkeareaö	Udvendige mål W x H x D	Åbningsmål w x h	Vægt	Art.-nr.
	GH 6x1 GALV	1	120 x 180	252.5 x 350 x 60	148(+5/-5) x 245(+5/-5)	4.4	5GH0000007882
	GH 6x2 GALV	2	120 x 180	383 x 350 x 60	278(+5/-5) x 245(+5/-5)	7.5	5GH0000007828
	GH 6x3 GALV	3	120 x 180	513.5 x 350 x 60	409(+5/-5) x 245(+5/-5)	10.4	5GH0000008108
	GH 6x1 AISI316	1	120 x 180	252.5 x 350 x 60	148(+5/-5) x 245(+5/-5)	4.9	5GH0000008261
	GH 6x2 AISI316	2	120 x 180	383 x 350 x 60	278(+5/-5) x 245(+5/-5)	7.3	5GH0000008179
	GH 6x3 AISI316	3	120 x 180	513.5 x 350 x 60	409(+5/-5) x 245(+5/-5)	10.1	5GH0000009292

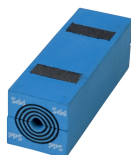


Data om tætningskomponenter

Tætningskomponenter



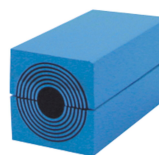
Lubrikant



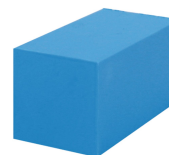
RM PPS-modul med Multidiameter™



wedge og wedgekit



RM-modul med Multidiameter™



RM fast kompensationsmodul



Stayplate

For merne information, besøg venligst [roxtec.com](https://www.roxtec.com).

The product information provided by Roxtec does not release the purchaser of the Roxtec system, or part thereof, from the obligation to independently determine the suitability of the products for the intended process, installation and/or use.

Roxtec gives no guarantee for the Roxtec system or any part thereof and assumes no liability for any loss or damage whatsoever, whether direct, indirect, consequential, loss of profit or otherwise, occurred or caused by the Roxtec systems or installations containing components not manufactured by an authorized manufacturer and/or occurred or caused by the use of the Roxtec system in a manner or for an application other than for which the Roxtec system was designed or intended.

Roxtec expressly excludes any implied warranties of merchantability and fitness for a particular purpose and all other express or implied representations and warranties provided by statute or common law. User determines suitability of the Roxtec system for intended use and assumes all risk and liability in connection therewith. In no event shall Roxtec be liable for indirect, consequential, punitive, special, exemplary or incidental damages or losses.

The Roxtec products are offered and sold in accordance with the conditions of the Roxtec General Terms of Sales. The latest version of the Roxtec General Terms of Sales can be downloaded from <https://www.roxtec.com/en/about-us/about-roxtec/general-terms-of-sales/>

We reserve the right to make changes to the product and technical information without further notice. Any errors in print or entry are no claims for indemnity. The content of this publication is the property of Roxtec International AB and is protected by copyright.

This document was generated on: 2024-04-17